



Sky Harmony

A Rhythm for Living

HANDOVER
Q4 2027

A PROJECT BY:

PEACE HOMES
DEVELOPMENT

PRESENTED BY:


ABRA

VER 02
19 Feb 2026



The image features a modern architectural scene. On the right, a tall building with a wavy, undulating facade is shown. The facade is composed of numerous horizontal, curved panels that create a rhythmic, wave-like pattern. The building has large glass windows and balconies. At the top of the building, there is a rooftop garden with green trees. To the left of the building, a large, curved, textured structure, possibly a ceiling or a wall, is visible. The structure has a complex, organic shape with many small, curved lines that create a sense of movement and depth. The overall color palette is warm, with shades of beige, tan, and brown. The lighting is soft and even, highlighting the textures and curves of the architecture.

A RHYTHM FOR LIVING

WHY INVEST IN DUBAI?

Tax & Returns

- 0% Tax Real Estate Environment
- Strong Capital Appreciation & High ROI

Security & Stability

- Resilient, Safe-Haven Market
- One of the World's Safest and Most Secure Cities

Ownership & Policy

- 100% Foreign Ownership in Freehold Zones
- Investor-Protective Regulatory Framework

Residency & Long-Term Value

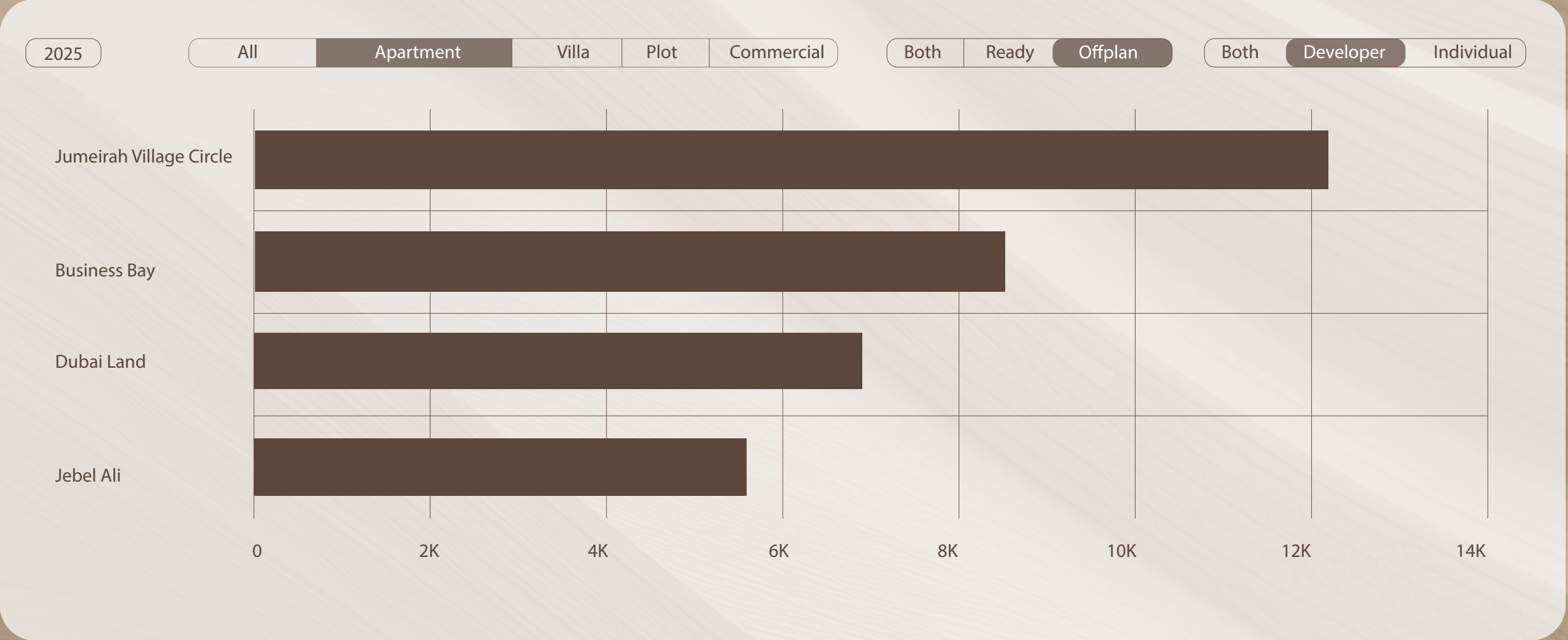
- Eligibility for 10-Year Golden Visa
- Attractive Long-Term Value



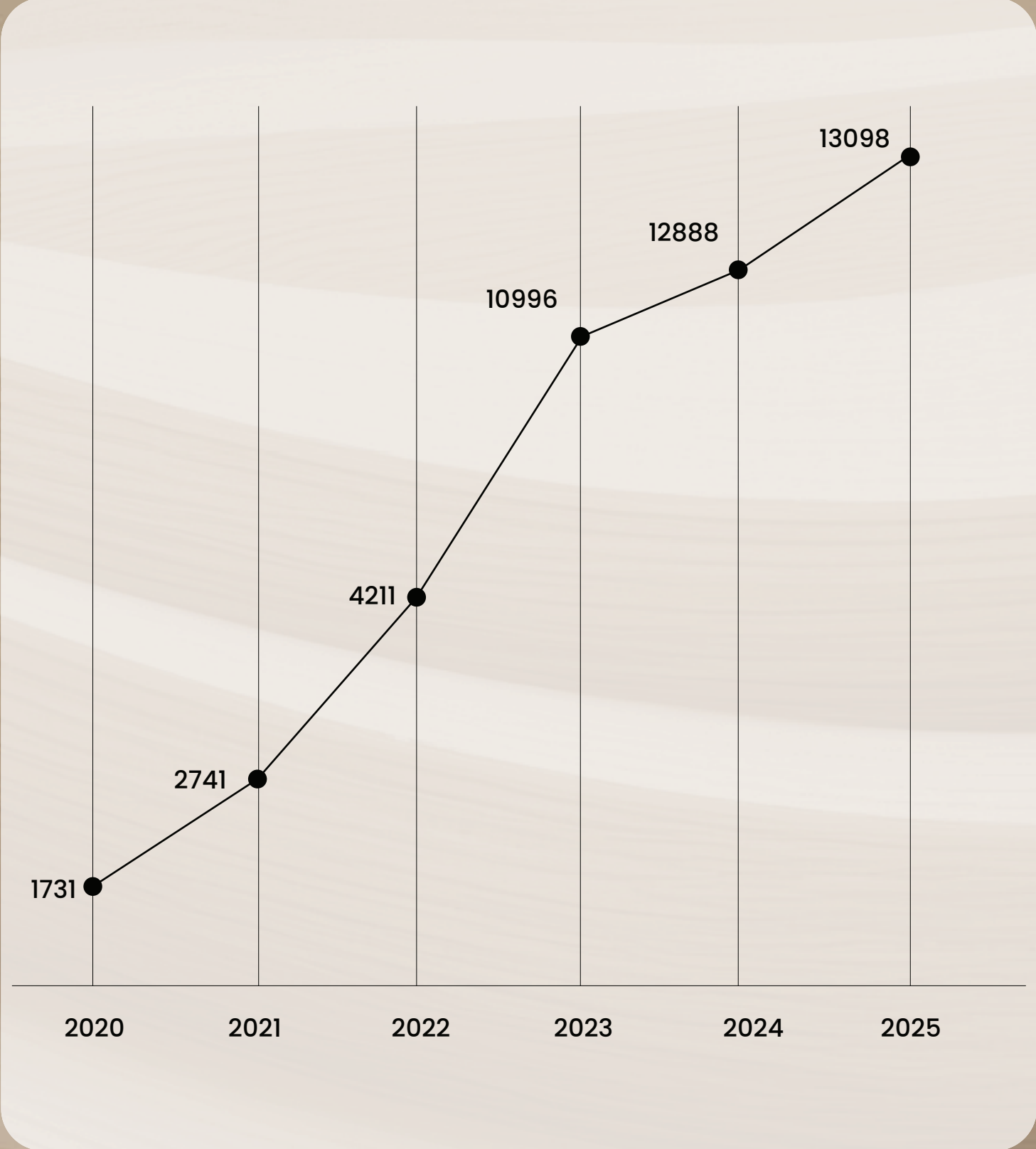
JUMEIRAH VILLAGE CIRCLE

Where Demand Leads the Market

Jumeirah Village Circle (JVC) continues to demonstrate strong market confidence, consistently ranking among Dubai’s top-performing areas in sales driven by sustained demand. Over the years, it has also remained one of the city’s leading locations for high return on investment. Its central location and lifestyle appeal position JVC as a well-established, high-demand community with strong long term growth potential.



TOP 4 PERFORMING AREAS 2025



ANNUAL SALES VOLUME

LOCATION ADVANTAGE

Jumeirah Village Circle is a growing community defined by green parks with jogging tracks and sports areas, quality schools, pet-friendly parks with dedicated play zones, and convenient access to everyday essentials such as hypermarkets. It offers a balanced lifestyle with seamless connectivity through multiple gateways to **Sheikh Mohammed Bin Zayed Road, Al Khail Road, and Hessa Street**, along with accessible transportation networks

- 10 min Global Village / IMG Worlds of Adventure
- 12 min Dubai Marina
- 15 min Palm Jumeirah / Jumeirah Beach
- 20 min Burj Khalifa / Dubai Mall
- 20 min Downtown/ Business Bay
- 25 min Dubai International Airport (DXB)
- 25 min Al Maktoum International Airport (DWC)



BUILDING COMPONENT

12 Residential Floors

- 2nd - 12th Residential
- 1st Amenities Floor

4 Podiums

Ground Floor / Retail Shops





RESIDENTIAL

STUDIO	(90 UNITS)
1 BHK	(90 UNITS)
2 BHK	(10 UNITS)
2 BHK Penthouse	(4 UNITS)





90 UNITS
STUDIO
+JACUZZI



STUDIO

+JACUZZI
UNIT LAYOUT

SIZES
400 UP TO 450 SQ.FT



90 UNITS
1 BEDROOM
+ JACUZZI



1 BEDROOM

+ JACUZZI
UNIT LAYOUT

SIZES
720 UP TO 862 SQ.FT



10 UNITS
2 BEDROOM
+JACUZZI



2 BEDROOM

+JACUZZI
UNIT LAYOUT

SIZES
1312 SQ.FT



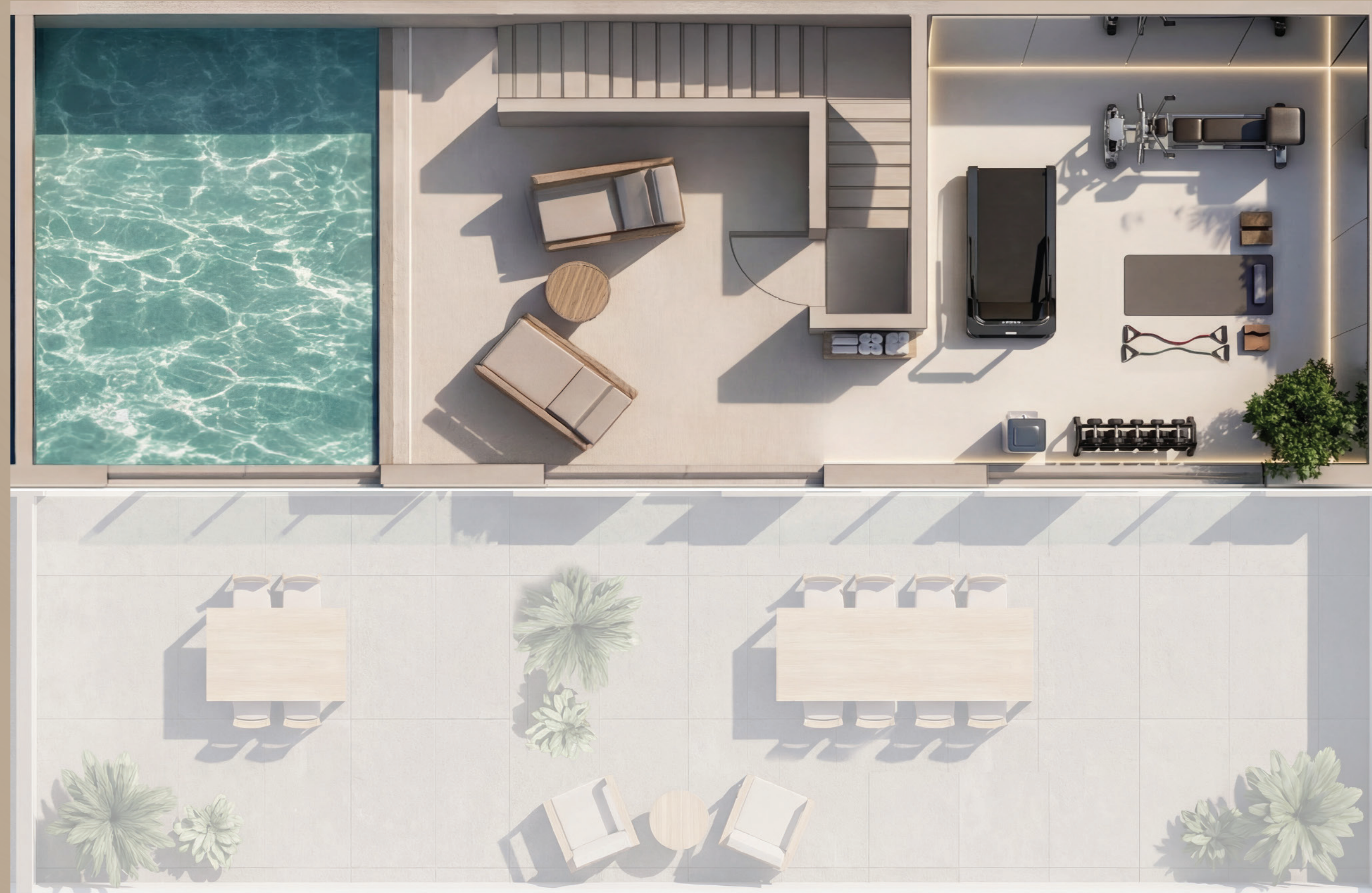
4 UNITS
2 BEDROOM PENTHOUSE
+POOL



2 BEDROOM PENTHOUSE

+POOL
UNIT LAYOUT

SIZES
1800 UP TO 2406 SQ.FT



2 BEDROOM PENTHOUSE

+POOL
ROOF TOP LAYOUT

SIZES
1800 UP TO 2406 SQ.FT



TYPICAL
FLOOR PLAN
2nd – 6th



TYPICAL
FLOOR PLAN
7th - 11th



12th
FLOOR PLAN



12th
ROOF TOP
FLOOR PLAN

20+ AMENITIES



Sauna/Steam Room



Kids play area



Kids pool



Jacuzzi



Swimming pool



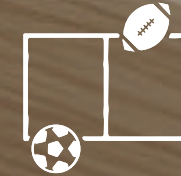
Outdoor Lounge Beds



Open Cinema



Mocktail Bar



Multiple Sports Area



Aerobic Studio



Gym



Business Lounge



Floating Sun Beds



Community Room



Library



24 Hours Security



Jogging Track



Shaded Pavilion



Dining Outlets



Mini Golf



FIRST FLOOR AMENITIES



INTERIORS







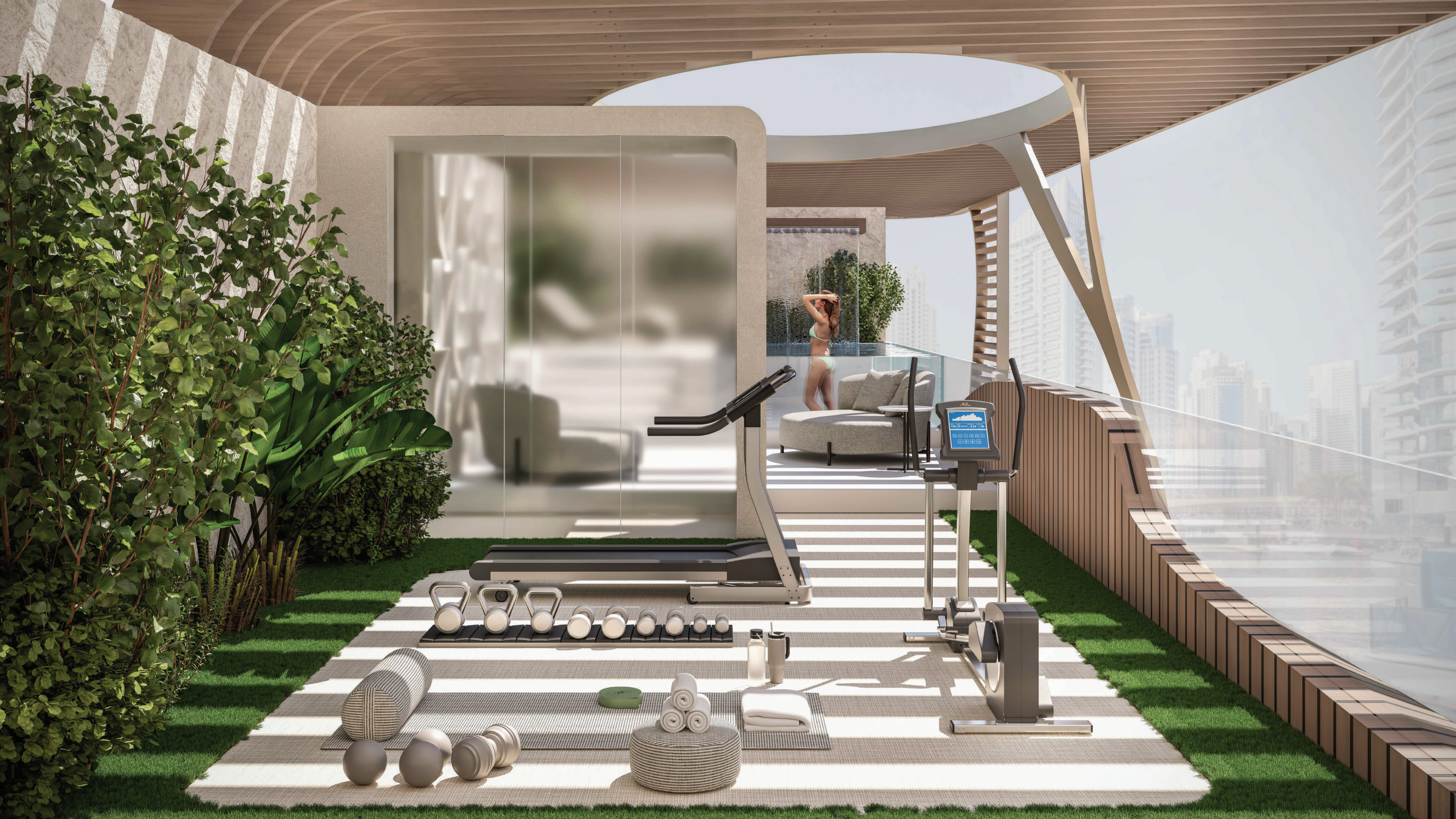






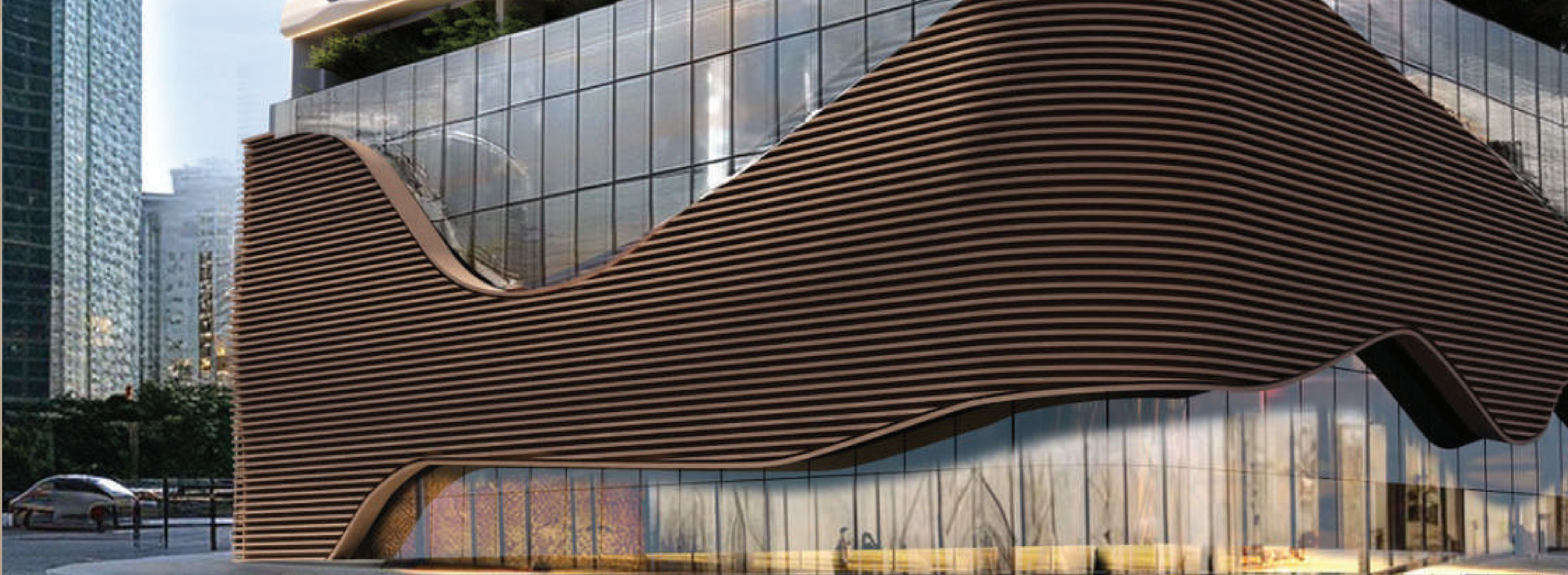












3 RETAIL SHOPS

PAYMENT PLAN

20% Down Payment

40% Related to Construction Stage

40% Upon Handover



Sky Harmony

A Rhythm for Living

A PROJECT BY:

PEACE HOMES
DEVELOPMENT

PRESENTED BY:



ABRA